

# ALGEMENE GEGEVENS BALK 4

WERK : 2118

ONDERDEEL : Fundering

TOTALE LENGTE BALK = 8.700 m

VERING  
(mm/KN)

INGESTELDE  
ZAKKING VOORAF

VRIJ OPGELEGD LINKS

VELD 14 - 12 LENGTE = 3.000 m EI= 44800 KNm<sup>2</sup>

KNOOP 14 X = 0.000 m 0.01000

0.00000 mm

VELD 12 - 11 LENGTE = 2.850 m EI= 44800 KNm<sup>2</sup>

KNOOP 12 X = 3.000 m 0.01000

0.00000 mm

VELD 11 - 3 LENGTE = 2.850 m EI= 44800 KNm<sup>2</sup>

KNOOP 11 X = 5.850 m 0.01000

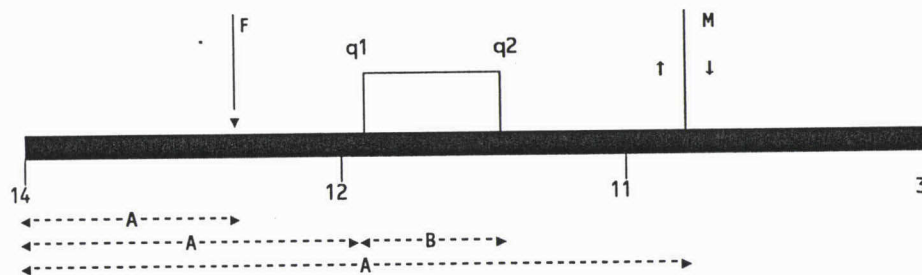
0.00000 mm

KNOOP 3 X = 8.700 m 0.01000

0.00000 mm

VRIJ OPGELEGD RECHTS

## KRACHTENOVERZICHT



| PUNTLASTEN | N <sup>o</sup> | F        | A       |
|------------|----------------|----------|---------|
| =====      | 1              | 27.40 KN | 4.350 m |

| Q-LASTEN | N <sup>o</sup> | q1         | q2         | A       | B       |
|----------|----------------|------------|------------|---------|---------|
| =====    | 1              | 35.50 KN/m | 40.90 KN/m | 0.000 m | 3.000 m |
|          | 2              | 39.80 KN/m | 40.90 KN/m | 3.000 m | 1.350 m |
|          | 3              | 40.90 KN/m | 36.40 KN/m | 4.350 m | 4.350 m |

| X        | MOMENT | DWARKRACHT  | REAKTIE | ZAKKING<br>( mm ) | HOEKVERDR.<br>( mRAD ) |
|----------|--------|-------------|---------|-------------------|------------------------|
| KNOOP 14 | -0.00  | DIREKT 0.00 | 46.60   | 1.1896            | 0.9080                 |
| 0.000    |        | R 46.60     |         |                   |                        |
| 3.000    |        | L -68.00    |         |                   |                        |
| KNOOP 12 | -28.04 | DIREKT 0.00 | 133.85  | 1.9884            | -0.0716                |
| 3.000    |        | R 65.85     |         |                   |                        |
| 5.850    |        | L -76.20    |         |                   |                        |
| KNOOP 11 | -45.20 | DIREKT 0.00 | 146.74  | 1.4674            | -0.1005                |
| 5.850    |        | R 70.53     |         |                   |                        |
| 8.700    |        | L -37.41    |         |                   |                        |
| KNOOP 3  | 0.00   | DIREKT 0.00 | 37.41   | 1.5826            | -0.2936                |

MAXIMALE VELDMOMENTEN  
=====

\* MAXIMALE VELDZAKKINGEN  
\* =====

| VELD    | X     | MOMENT | DWARKRACHT | * X     | ZAKKING ( mm )       |
|---------|-------|--------|------------|---------|----------------------|
| 14 - 12 | 1.272 | 29.94  | 0.00       | * 1.820 | 2.1660 = 0.00072 * L |
| 12 - 11 | 4.350 | 24.26  | 11.38      | * 3.914 | 2.0233 = 0.00071 * L |
| 11 - 3  | 7.687 | 19.04  | -0.00      | * 7.671 | 1.7713 = 0.00062 * L |